

19" Patch Panel RJ-45, Category 6

Hyperline patch panel of category 6 meets ISO/IEC and TIA requirements for category 6 and class E. These requirements define the upper frequency limit to 250 MHz. This classification is an enhanced version of category 5e classification. The usage of the patch panels in combination with patch cords of the same or higher category provides effective work of equipment.

19" Patch Panel, 16 ports RJ-45, Category 6

PP2-19-16-8P8C-C6-110



19" Patch Panel, 24 ports RJ-45, Category 6

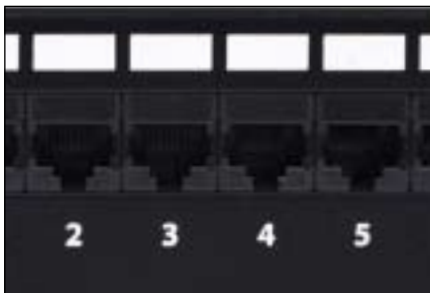
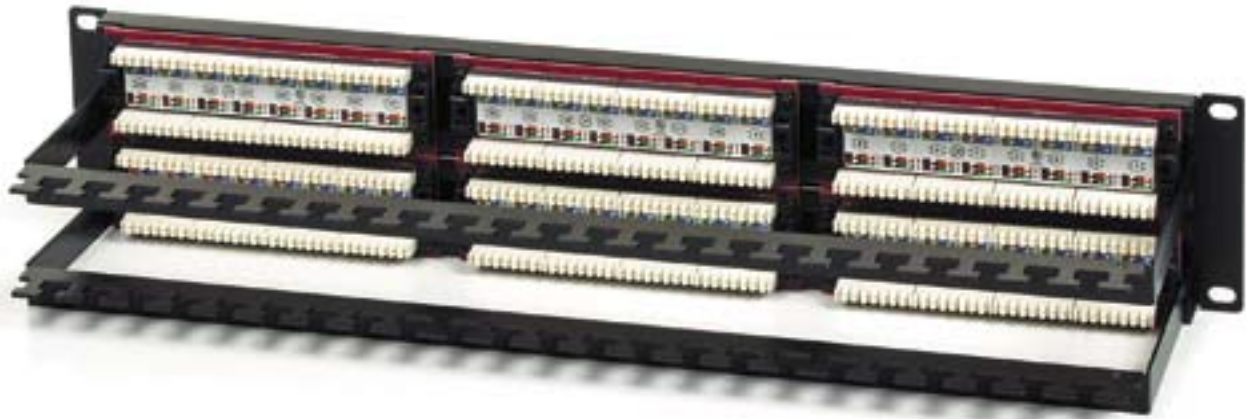
PP2-19-24-8P8C-C6-110



19" Patch Panel, 48 ports RJ-45, Category 6

PP2-19-48-8P8C-C6-110





Specifications	<p>Meets ANSI/TIA/EIA-568-B.2 Category 6 requirements</p> <p>Meets TIA/EIA TSB-40</p> <p>Meets ISO/IEC Generic Cabling Standard 11801:2002 ed.2.0</p> <p>Meets CENELEC Generic Cabling Standard EN50173 – 1:2002</p>
Description	<p>19" standard size for mounting in racks and cabinets</p> <p>This patch panel is designed for 22 – 26 AWG solid conductors</p> <p>Height: 1U, 2U</p> <p>Horizontal termination</p>
Materials	<p>Housing: ABS 94V-0</p> <p>IDC: PC UL94V-0</p> <p>PCB: FR-4 0.06" (1.6 mm) thick, 2 layers</p> <p>Contacts: 0.014" (0.35 mm) phosphor bronze with 50 microinches (1.27 micron) gold plating on contact area</p> <p>Metal housing: 0.06" (1.6 mm) thick metal</p>
Construction characteristic features	<p>Modern design and mounting simplicity</p> <p>Color marking of conductors according to T568B and T568A</p> <p>Numeral marking of ports on the front side of the panel</p> <p>Color and numeral marking of IDC modules on the rear side of the panel</p> <p>Space for additional marking</p> <p>Hyperline patch cord usage provides the best connection</p> <p>IDC Dual contacts provide minimal crosstalk</p> <p>110 type punch down tool is used for cable termination</p>
Electrical characteristics	<p>According to UL 1863</p> <p>Current rating: 1.5 A max</p> <p>Voltage rating: 150 V</p> <p>Contact Resistance: 20 m-ohm</p> <p>Insulation Resistance: 500 M-ohm</p> <p>Dielectric withstand voltage: 1000 V AC RMS, 60Hz/1min</p>
Package	<p>Hyperline Patch panel</p> <p>Cable manager</p> <p>Plastic cable ties</p>
Ordering information	<p>PP2-19-16-8P8C-C6-110</p> <p>19" Patch panel, 16 ports RJ-45, category 6</p> <p>PP2-19-24-8P8C-C6-110</p> <p>19" Patch panel, 24 ports RJ-45, category 6</p> <p>PP2-19-48-8P8C-C6-110</p> <p>19" Patch panel, 48 ports RJ-45, category 6</p>

19" Patch Panel RJ-45, Category 5e

19" Patch Panel, 12 ports RJ-45, Category 5e

PP2-19-12-8P8C-C5e-110D



19" Patch Panel, 16 ports RJ-45, Category 5e

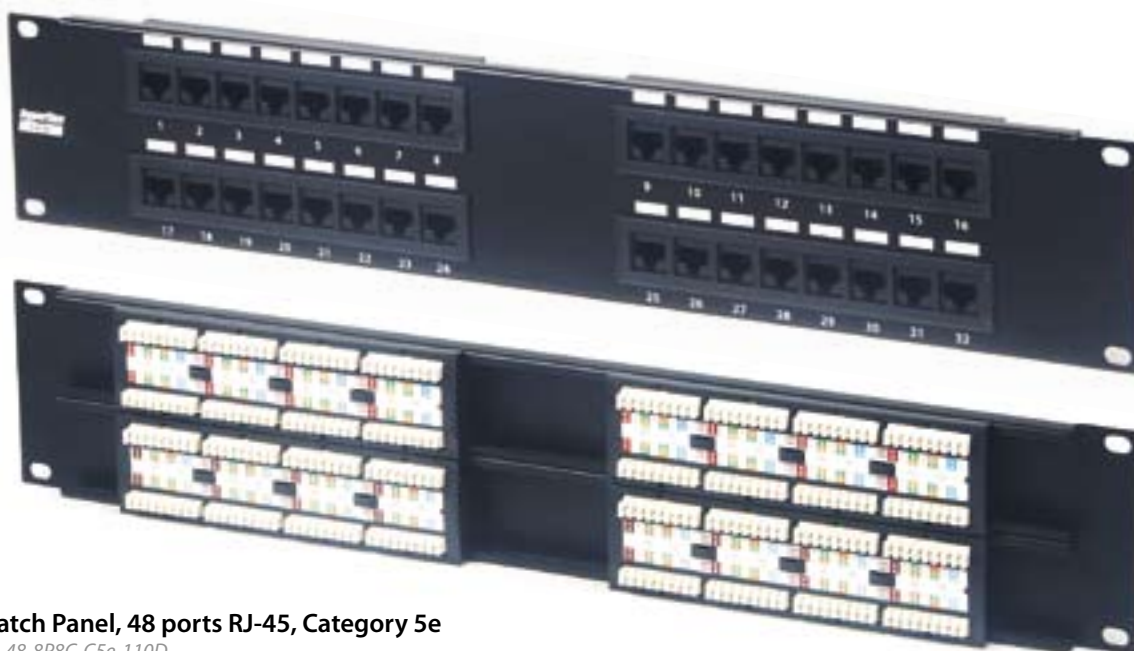
PP2-19-16-8P8C-C5e-110D



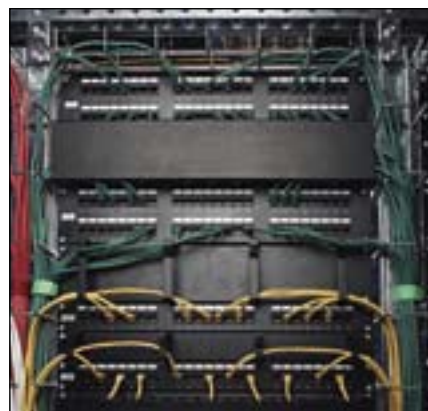
19" Patch Panel, 24 ports RJ-45, Category 5e

PP2-19-24-8P8C-C5e-110D



19" Patch Panel, 32 ports RJ-45, Category 5e*PP2-19-32-8P8C-C5e-110D***19" Patch Panel, 48 ports RJ-45, Category 5e***PP2-19-48-8P8C-C5e-110D*

Specifications	Meets ANSI/TIA/EIA-568-B.2 Category 5e requirements Meets TIA/EIA TSB-40 Meets ISO/IEC Generic Cabling Standard 11801 Meets CENELEC Generic Cabling Standard EN50173
Description	19" standard size for mounting in racks and cabinets This patch panel is designed for 22–26 AWG solid conductors Height: 1U (12, 16 and 24 ports), 2U (32 and 48 ports) Horizontal termination
Materials	Housing: ABS 94V-0 IDC: PC UL94V-0 PCB: FR-4 0.06" (1.6 mm) thick, 2 layers Contacts: 0.014" (0.35 mm) phosphor bronze with 50 microinches (1.27 micron) gold plating on contact area Metal housing: 0.06" (1.6 mm) thick metal
Construction characteristic features	Color marking of conductors according to T568B and T568A Numeral marking of ports on the front side of the panel Space for additional marking Color and numeral marking of IDC modules on the rear side of the panel Hyperline patch cord usage provides the best connection IDC Dual contacts provide minimal crosstalk 110 type punch down tool is used for cable termination
Electrical characteristics	According to UL 1863 Current rating: 1.5 A max Voltage rating: 150 V Contact Resistance: 20 m-ohm Insulation Resistance: 500 M-ohm Dielectric withstand voltage: 1000 V AC RMS, 60Hz/1min
Package	Hyperline Patch panel Plastic cable ties
Ordering information	PP2-19-12-8P8C-C5e-110D 19" Patch panel, 12 ports RJ-45, category 5e, Dual IDC PP2-19-16-8P8C-C5e-110D 19" Patch panel, 16 ports RJ-45, category 5e, Dual IDC PP2-19-24-8P8C-C5e-110D 19" Patch panel, 24 ports RJ-45, category 5e, Dual IDC PP2-19-32-8P8C-C5e-110D 19" Patch panel, 32 ports RJ-45, category 5e, Dual IDC PP2-19-48-8P8C-C5e-110D 19" Patch panel, 48 ports RJ-45, category 5e, Dual IDC



19" Shielded Patch Panel RJ-45, Category 6

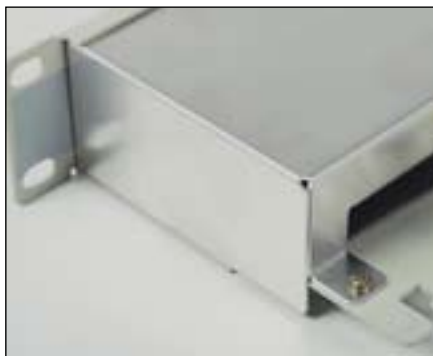
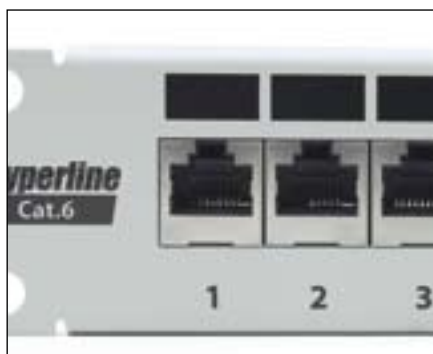
19" Patch Panel, 16 ports, RJ-45, Fully Shielded, Category 6

PP-19-16-8P8C-C6-SH-110D



19" Patch Panel, 24 ports RJ-45, Fully Shielded, Category 6

PP-19-24-8P8C-C6-SH-110D



Hyperline 16- and 24-port shielded patch panel of category 6 can be mounted in 19" racks or cabinets. There is Cat 6 marking, numeral port marking, and space for additional marking. The panel has the pin connection scheme of T568B and T568A.

Cable clamping clips and grounding provide shielding continuity. The cover which is fixed on the panel protects panel contacts from outer electromagnetic fields. There is an inbuilt rear cable manager for cable fixation with ties.

Specifications	Meets ANSI/TIA/EIA-568-B.2 Category 6 requirements Meets TIA/EIA TSB-40 Meets ISO/IEC Generic Cabling Standard 11801:2002 ed.2.0 Meets CENELEC Generic Cabling Standard EN50173 – 1:2002
Description	19" standard size for mounting in racks and cabinets This patch panel is designed for 22 – 26 AWG solid conductors Height: 1U Vertical termination
Materials	Housing: 0.06" (1.6 mm) thick steel Cover: 0.039" (1 mm) thick steel PCB (printed circuit board): FR-4 0.06" (1.6 mm) thick, 2 layers Contacts: 0.018" (0.45 mm) phosphor bronze with 50 microinches (1.27 micron) gold plating on contact area IDC: PC UL94V-0
Construction characteristic features	Modern design and mounting simplicity Color marking of conductors according to T568B and T568A Numeral marking of ports on the front side of the panel Numeral marking of IDC modules on the rear side of the panel Space for additional marking
Electrical characteristics	According to UL 1863 Current rating: 1.5 A max Voltage rating: 150 V Contact resistance: 20 m-ohm Insulation resistance: 500 M-ohm Dielectric withstand voltage: 1000 V AC RMS, 60Hz/1min
Package	Hyperline Patch panel Plastic cable ties
Ordering information	PP-19-16-8P8C-C6-SH-110D 19" Patch panel, 16 ports RJ-45, fully shielded, category 6, Dual IDC PP-19-24-8P8C-C6-SH-110D 19" Patch panel, 24 ports RJ-45, fully shielded, category 6, Dual IDC

19" Shielded Patch Panel RJ-45, Category 5e

Characteristics for category 5e shielded patch panel (16, 24 ports) exceed Category 5e specification requirements. The panels are equipped with the rear cable manager which provides appropriate bend radius and freedom from mechanical stress of cable. Removable shield protects from high-frequency and electromagnetic interference. Patch panel design provides easy access to 110 type connectors. RJ-45 Ports (8P8C) are equipped with 110 type IDC modules which are integrated into the printed circuit board. The ports are designed for 22–26 AWG solid cable. The panel is equipped with ground wire. Shielding continuity is provided by cable clamping clips.



19" Patch Panel, 16 ports RJ-45, Fully Shielded, Category 5e

PP-19-16-8P8C-C5e-SH-110D



19" Patch Panel, 24 ports RJ-45, Fully Shielded, Category 5e

PP-19-24-8P8C-C5e-SH-110D





Specifications	Meets ANSI/TIA/EIA-568-B.2 Category 5e requirements Meets TIA/EIA TSB-40 Meets ISO/IEC Generic Cabling Standard 11801:2002 ed.2.0 Meets CENELEC Generic Cabling Standard EN50173 – 1:2002
Description	19" standard size for mounting in racks and cabinets This patch panel is designed for 22–26 AWG solid conductors Height: 1U Vertical termination
Materials	Housing of panel: 0.06" (1.6 mm) thick steel Cover: 0.039" (1 mm) thick steel PCB (printed circuit): FR-4 0.06" (1.6 mm) thick, 2 layers Contacts: 0.018" (0.45 mm) phosphor bronze with 50 microinches (1.27 micron) gold plating on contact area IDC: PC UL94V-0
Construction characteristic features	Modern design and mounting simplicity Color marking of conductors according to T568B and T568A Color and numeral marking of IDC modules on the rear side of the panel Numeral marking of ports on the front side of the panel Removable shield cover Ground bus Built-in rear cable manager
Electrical characteristics	According to UL 1863 Current rating: 1.5 A max Voltage rating: 150 V Contact resistance: 20 m-ohm Insulation resistance: 500 M-ohm Dielectric withstand voltage: 1000 V AC RMS, 60Hz/1min
Package	Hyperline Patch panel Plastic cable ties
Ordering information	PP-19-16-8P8C-C5e-SH-110D 19" Patch panel, 16 ports RJ-45, fully shielded, category 5e, Dual IDC PP-19-24-8P8C-C5e-SH-110D 19" Patch panel, 24 ports RJ-45, fully shielded, category 5e, Dual IDC

Front Access Wall Mount Patch Panel RJ-45, Category 6

Front Access Wall Mount Patch Panel, 12 ports RJ-45, Category 6

PPW-12-8P8C-C6-FR



Front Access Wall Mount Patch Panel, 24 ports RJ-45, Category 6

PPW-24-8P8C-C6-FR



Category 6 front access wall mount patch panels are designed to operate at a frequency of 250 MHz, which is 2.5 times higher than that of category 5 components. IDC modules are placed on the front side of the panel for easy termination. After cable termination, modules are closed down with a cover that has space for additional port marking. Cable guided to the ports through the side opening of the panel is arranged in special ducts.

Specifications	Meets ANSI/TIA/EIA-568-B.2 Category 6 requirements Meets TIA/EIA TSB-40 Meets ISO/IEC Generic Cabling Standard 11801:2002 ed.2.0 Meets CENELEC Generic Cabling Standard EN50173 – 1:2002
Description	Smooth rear side of panel for convenient wall mounting This patch panel is designed for 22 – 26 AWG solid conductors Height: 1U Horizontal termination
Materials	IDC: PC UL94V-0 PCB: FR-4 0.06" (1.6 mm) thick, 2 layers Contacts: 0.014" (0.35 mm) phosphor bronze with 50 microinches (1.27 micron) gold plating on contact area Metal housing: 0.04" (1.2 mm) thick metal
Construction characteristic features	Modern design and mounting simplicity Color marking of conductors according to T568B and T568A Color and numeral marking of IDC modules on the front side of the panel Numeral marking on the cover Space for additional marking Hyperline patch cord usage provides the best connection Dual IDC contacts provide minimal crosstalk 110 type punch down tool is used for cable termination
Electrical characteristics	According to UL 1863 Current rating: 1.5 A max Voltage rating: 150 V Contact resistance: 20 m-ohm Insulation resistance: 500 M-ohm Dielectric withstand voltage: 1000 V AC RMS, 60Hz/1min
Package	Hyperline Patch panel Plastic cable ties
Ordering information	PPW-12-8P8C-C6-FR Front access wall mount patch panel, 12 ports RJ-45, category 6 PPW-24-8P8C-C6-FR Front access wall mount patch panel, 24 ports RJ-45, category 6



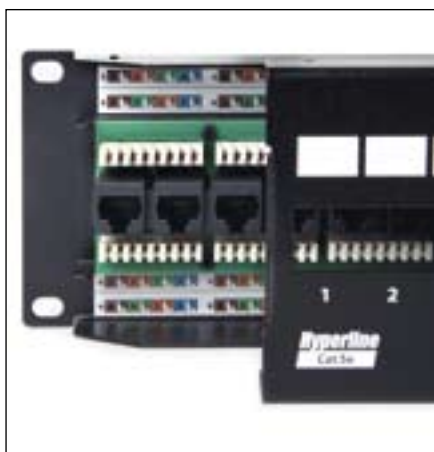
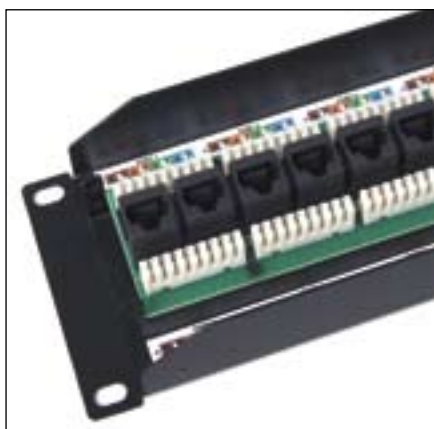
Front Access Wall Mount Patch Panel RJ-45, Category 5e

Front Access Wall Mount Patch Panel, 12 ports RJ-45, Category 5e
PPW-12-8P8C-C5e-FR



Front Access Wall Mount Patch Panel, 24 ports RJ-45, Category 5e
PPW-24-8P8C-C5e-FR





Specifications	Meets ANSI/TIA/EIA-568-B.2 Category 5e requirements Meets TIA/EIA TSB-40 Meets ISO/IEC Generic Cabling Standard 11801:2002 ed.2.0 Meets CENELEC Generic Cabling Standard EN50173 – 1:2002
Description	Smooth rear side of panel for convenient mounting to the wall This patch panel is designed for 22 – 26 AWG solid conductors Height is 1U Horizontal termination
Materials	IDC: PC UL94V-0 PCB: FR-4 0.06" (1.6 mm) thick, 2 layers Contacts: 0.014" (0.35 mm) phosphor bronze with 50 microinches (1.27 micron) gold plating on contact area Metal housing: 0.04" (1.2 mm) thick metal
Construction characteristic features	Modern design and mounting simplicity Color marking of conductors according to T568B and T568A Color and numeral marking of IDC modules on the front side of the panel Numeral marking on the cover Space for additional marking Hyperline patch cord usage provides the best connection Dual IDC contacts provide minimal crosstalk 110 type punch down tool is used for cable termination
Electrical characteristics	According to UL 1863 Current rating: 1.5 A max Voltage rating: 150 V Contact resistance: 20 m-ohm Insulation resistance: 500 M-ohm Dielectric withstand voltage: 1000 V AC RMS, 60Hz/1min
Package	Hyperline Patch panel Plastic cable ties
Ordering information	PPW-12-8P8C-C5e-FR Front access wall mount patch panel, 12 ports RJ-45, category 5e PPW-24-8P8C-C5e-FR Front access wall mount patch panel, 24 ports RJ-45, category 5e

Wall Mount Patch Panel RJ-45, Category 6

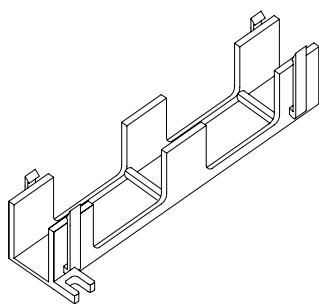
Wall Mount Patch Panel, 12 ports RJ-45, Aluminum

PPW-12-8P8C-C6-AL

Wall Mount Patch Panel, 12 ports RJ-45

PPW-12-8P8C-C6





Specifications	Meets ANSI/TIA/EIA-568-B.2 Category 6 requirements Meets TIA/EIA TSB-40 Meets ISO/IEC Generic Cabling Standard 11801:2002 ed.2.0 Meets CENELEC Generic Cabling Standard EN50173-1:2002
Description	For mounting directly to the wall and to the frames of 66 type cross panel This patch panel is designed for 22 – 26 AWG solid conductors Horizontal termination
Materials	IDC: PC UL94V-0 PCB: FR-4 thick 0.06" (1.6 mm), 2 layers Contacts: 0.014" (0.35 mm) phosphor bronze with 50 microinches (1.27 micron) gold plating on contact area For patch panel PPW-12-8P8C-C6-AL – aluminium housing: 0.05" (1.5 mm) thick For patch panel PPW-12-8P8C-C6 – plastic housing: 0.06" (1.6 mm) thick
Construction characteristic features	Modern design and simplicity of mounting Color marking of conductors according to T568B and T568A Numeral marking of ports on the front side of the panel Color and numeral marking of IDC modules on the rear side of the panel Space for additional marking Hyperline patch cord usage provides the best connection Dual IDC contacts provide minimal crosstalk 110 type punch down tool is used for cable termination
Electrical characteristics	According to UL 1863 Current rating: 1.5 A max Voltage rating: 150 V Contact resistance: 20 m-ohm Insulation resistance: 500 M-ohm Dielectric withstand voltage: 1000 V AC RMS, 60Hz/1min
Package	Hyperline patch panel Bracket Plastic cable ties
Ordering information	PPW-12-8P8C-C6-AL Wall mount patch panel, 12 ports RJ-45, category 6, aluminium, with bracket PPW-12-8P8C-C6 Wall mount patch panel, 12 ports RJ-45, category 6, with bracket

Wall Mount Patch Panel RJ-45, Category 5e

Wall Mount Patch Panel, 12 ports RJ-45

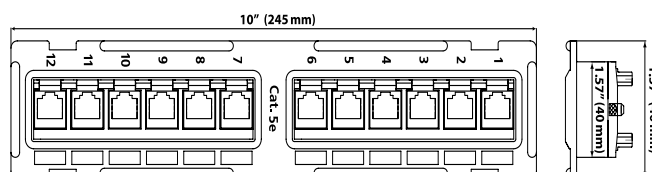
PPW-12-8P8C-C5e

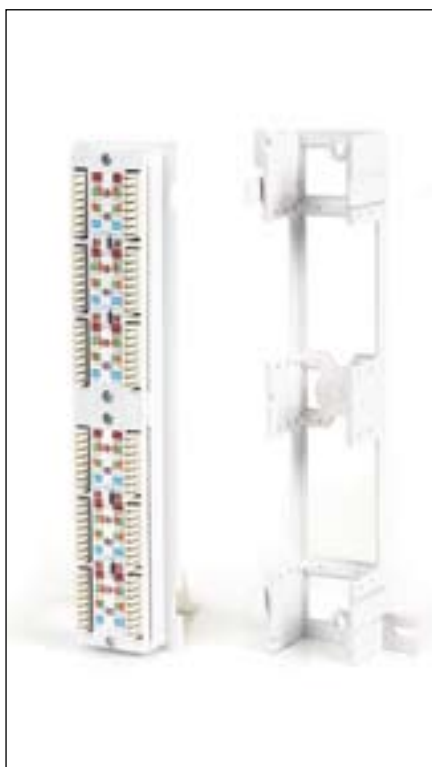


Hyperline wall mount patch panels are mounted directly to the wall with the help of brackets. There is no need for racks or cabinets. The patch panel is designed with 12 ports which makes it convenient to mount in a small office or any other limited space. There are two types of wall mount patch panels: one with plastic housing and a more durable aluminum one.

Wall mount patch panel consists of the main body which is latched into the bracket fixed on the wall. The panel is designed so that it can be easily removed from the bracket and terminated conveniently. Due to the depth of the panel, there is enough space between the wall and the cable. Additionally, the places of cable termination are securely protected against external damages.

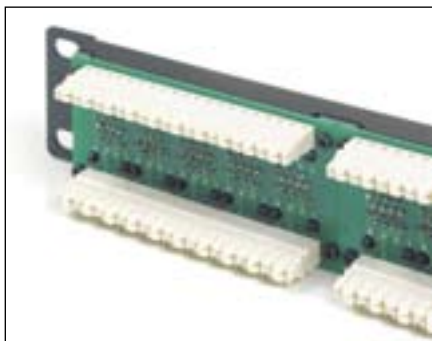
Numeric marking of the ports is placed vertically on the front of the panel in accordance with the mounting scheme.





Specifications	Meets ANSI/TIA/EIA-568-B.2 Category 5e requirements Meets TIA/EIA TSB-40 Meets ISO/IEC Generic Cabling Standard 11801 Meets CENELEC Generic Cabling Standard EN50173
Description	Mount directly to the wall and to the frames of 66 type cross panel This patch panel is designed for 22–26 AWG solid conductors Horizontal termination
Materials	Housing: ABS 94V-0 IDC: PC UL94V-0 PCB: FR-4 0.06" (1.6 mm) thick
Construction characteristic features	Modern design and simplicity of mounting Color marking of conductors according to T568B and T568A Numeral marking of ports on the front side of the panel Color and numeral marking of IDC modules on the rear side of the panel Space for additional marking Hyperline patch cord usage provides the best connection Dual IDC contacts provide minimal crosstalk 110 type punch down tool is used for cable termination
Electrical characteristics	According to UL 1863 Current rating: 1.5 A max Voltage rating: 150 V Contact resistance: 20 m-ohm Insulation resistance: 500 M-ohm
Package	Hyperline patch panel Bracket Plastic cable ties
Ordering information	PPW-12-8P8C-C5e Wall mount patch panel, 12 ports RJ-45, category 5e, with bracket

19" Patch Panel RJ-45, Category 5



The advantage of these panels is compact placement of the ports (the height of panel is only 1U (it is 1.75 inches or 44.45 mm)) as every port has an IDC contact for only 2 pairs. Therefore these patch panels can be used only for 10 Base-T and 100 Base-TX standards. For connection, only two pairs – orange and green which are 1–2 and 3–6 – are used.

Specifications	Meets ANSI/TIA/EIA-568-B.2 Category 5 requirements Meets TIA/EIA TSB-40 Meets ISO/IEC Generic Cabling Standard 11801 Meets CENELEC Generic Cabling Standard EN50173
Description	Standard size for mounting in 19" racks and cabinets This patch panel is designed for 22–26 AWG solid conductors Height: 1U Horizontal termination
Materials	Housing: ABS 94V-0 IDC: PC UL94V-0 PCB: FR-4 0.06" (1.6 mm) thick, 2 layers Contacts: 0.014" (0.35 mm) phosphor bronze with 50 microinches (1.27 micron) gold plating on contact area Metal housing: 0.06" (1.6 mm) thick of metal
Construction characteristic features	Modern design and simplicity of mounting Numeral marking of ports on the front side of the panel Numeral marking of IDC modules on the rear side of the panel Hyperline patch cord usage provides the best connection Dual IDC contacts provide minimal crosstalk 110 type punch down tool is used for cable termination
Electrical characteristics	According to UL 1863 Current rating: 1.5 A max Voltage rating: 150 V Contact resistance: 20 m-ohm Insulation resistance: 500 M-ohm Dielectric withstand voltage: 1000 V AC RMS, 60Hz/1min
Package	Hyperline patch panel Plastic cable ties
Ordering information	PP-19-50-8P8C-C5-110D 19"(1U) Patch panel, 50 ports RJ-45, category 5, Dual IDC (2 pairs for 1 port)

Patch Panel, 50 ports RJ-45*PP-19-50-8P8C-C5-110D***19" Telephone Patch Panel RJ-12, Category 2****19" Patch Panel, 16 ports RJ-12, Telephone***PP-19-16-6P6C-C2***19" Patch Panel, 24 ports RJ-12, Telephone***PP-19-24-6P6C-C2*

19" Patch Panel, 48 ports RJ-12, Telephone

PP-19-48-6P6C-C2



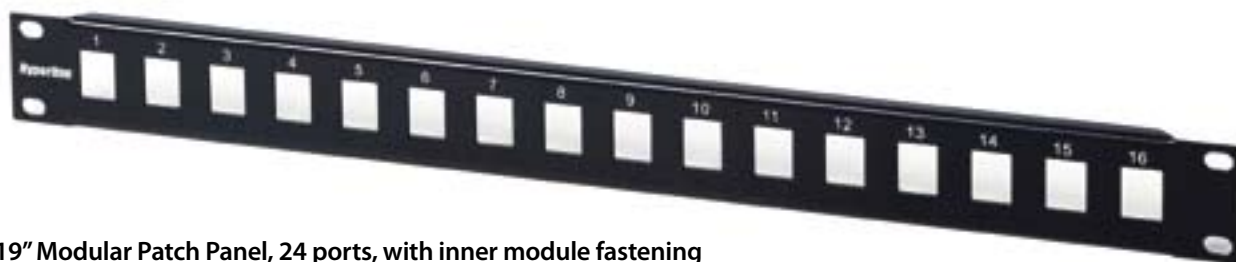
Specifications	Meets TIA/EIA TSB-40 Meets ISO/IEC Generic Cabling Standard 11801 Meets CENELEC Generic Cabling Standard EN50173
Description	Standard size for mounting in 19" racks and cabinets This patch panel is designed for 22 – 26 AWG solid conductors Height: 1U (16 and 24 ports), 2U (48 ports)
Materials	Housing: ABS 94V-0 IDC: PC UL94V-0 PCB: FR-4 0.06" (1.6 mm) thick, 2 layers Metal housing: thickness of metal – 0.06" (1.6 mm)
Construction characteristic features	Modern design and simplicity of mounting Marking of conductors is according to T568B and T568A Numeral marking of ports Space for additional marking Numeral marking of IDC modules on the rear side of the panel There are eyelets for cable fixing with cable ties
Electrical characteristics	According to UL 1863 Current rating: 1.5 A max Voltage rating: 150 V Contact resistance: 20 m-ohm Dielectric withstand voltage: 1000 V AC RMS, 60Hz/1min
Package	Hyperline patch panel Plastic cable ties
Ordering information	PP-19-16-6P4C-C2 19" Patch panel, 16 ports RJ-12, telephone PP-19-24-6P4C-C2 19" Patch panel, 24 ports RJ-12, telephone PP-19-48-6P4C-C2 19" Patch panel, 48 ports RJ-12, telephone



19" Modular Patch Panel

19" Modular Patch Panel, 16 ports, with inner module fastening

PPBL-19-16



19" Modular Patch Panel, 24 ports, with inner module fastening

PPBL-19-24



19" Modular Patch Panel, 32 ports, with inner module fastening

PPBL-19-32



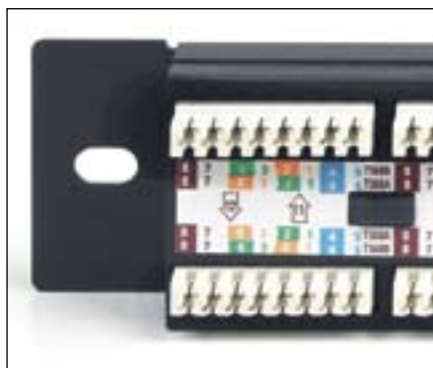
Specifications	Meets TIA/EIA 569
Description	Standard size for mounting in 19" racks and cabinets Height: 1U (16 ports), 2U (24 and 32 ports)
Materials	Metal housing: thickness of metal – 0.06" (1.6 mm)
Construction characteristic features	Modern design and simplicity of mounting Numeral marking of ports on the front side of the panel The panels are compatible with all Hyperline keystone jacks Possible variants: telephone keystone jack, category 5e/6 Keystone Jack, category 5e/6 shielded Keystone Jack
Package	Hyperline patch panel
Ordering information	PPBL-19-16 19" Modular patch panel, 16 ports, 1U, without modules, with inner module fastening PPBL-19-24 19" Modular patch panel, 24 ports, 2U, without modules, with inner module fastening PPBL-19-32 19" Modular patch panel, 32 ports, 2U, without modules, with inner module fastening



10" Patch Panels RJ-45, Category 5e

10" Patch Panel, 12 ports RJ-45, Category 5e, Dual IDC

PP-10-12-8P8C-C5e-110D



Specifications	Meets ANSI/TIA/EIA-568-B.2 Category 5e requirements Meets TIA/EIA TSB-40 Meets ISO/IEC Generic Cabling Standard 11801 Meets CENELEC Generic Cabling Standard EN50173
Description	Diminished size for mounting in 10" wall mount cabinets This patch panel is designed for 22 – 26 AWG solid conductors Height: 1U
Materials	Housing: ABS 94V-0 IDC: PC UL94V-0 PCB: FR-4 0.06" (1.6 mm) thick, 2 layers Contacts: 0.014" (0.35 mm) phosphor bronze with 50 microinches (1.27 micron) gold plating on contact area Metal housing: 0.06" (1.6 mm) metal thick
Construction characteristic features	Color marking of conductors according to T568B and T568A Numeral marking on the front side of the panel Space for additional marking Color and numeral marking of IDC modules on the rear side of the panel Hyperline patch-cord usage provides the best connection 110 type punch down tool is used for cable termination
Electrical characteristics	According to UL 1863 Current rating: 1.5 A max Voltage rating: 150 V Contact resistance: 20 m-ohm Insulation resistance: 500 M-ohm Dielectric withstand voltage: 1000 V AC RMS, 60Hz/1min
Package	Hyperline Patch panel Plastic cable ties
Ordering information	PP-10-12-8P8C-C5e-110D 10" Patch panel, 12 ports RJ-45, category 5e, Dual IDC

